



RAYDENT Microscan

Micro-CT 3D scanner for dental CAD/CAM treatment

The future of digital impression scanner



RAYDENT Microscan, the innovative Micro-CT 3D scanner, is now available to dental lab/clinic. It guarantees reliable scan results with accuracy, efficiency and productivity.

※ Micro-CT(Micro Computed Tomography) technology has been widely used for precise 3D measurements(analysis) in metrology lab and high-tech industry.

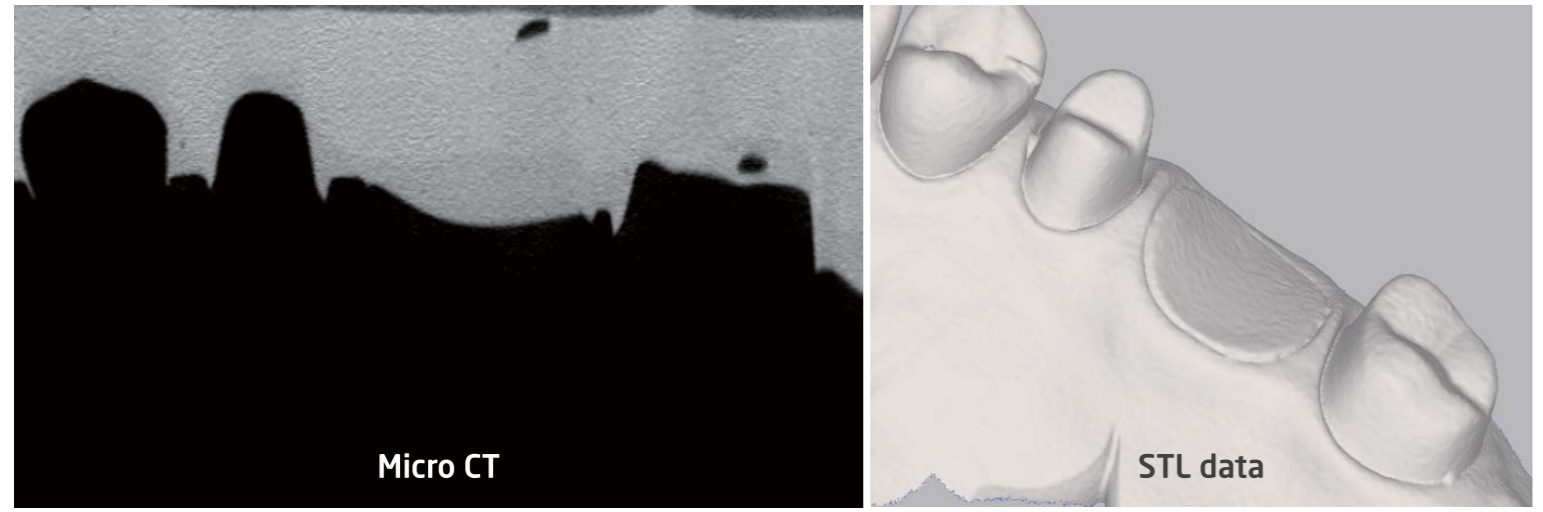


- Perfect scanning of undercut and shadow areas
- Faster workflow by eliminating scanning of plaster, die, and scanbody, distinct from traditional desktop dental scanners
- Modeless CAD/CAM workflow for prosthesis and orthodontic



A breakthrough in dental 3D scanning

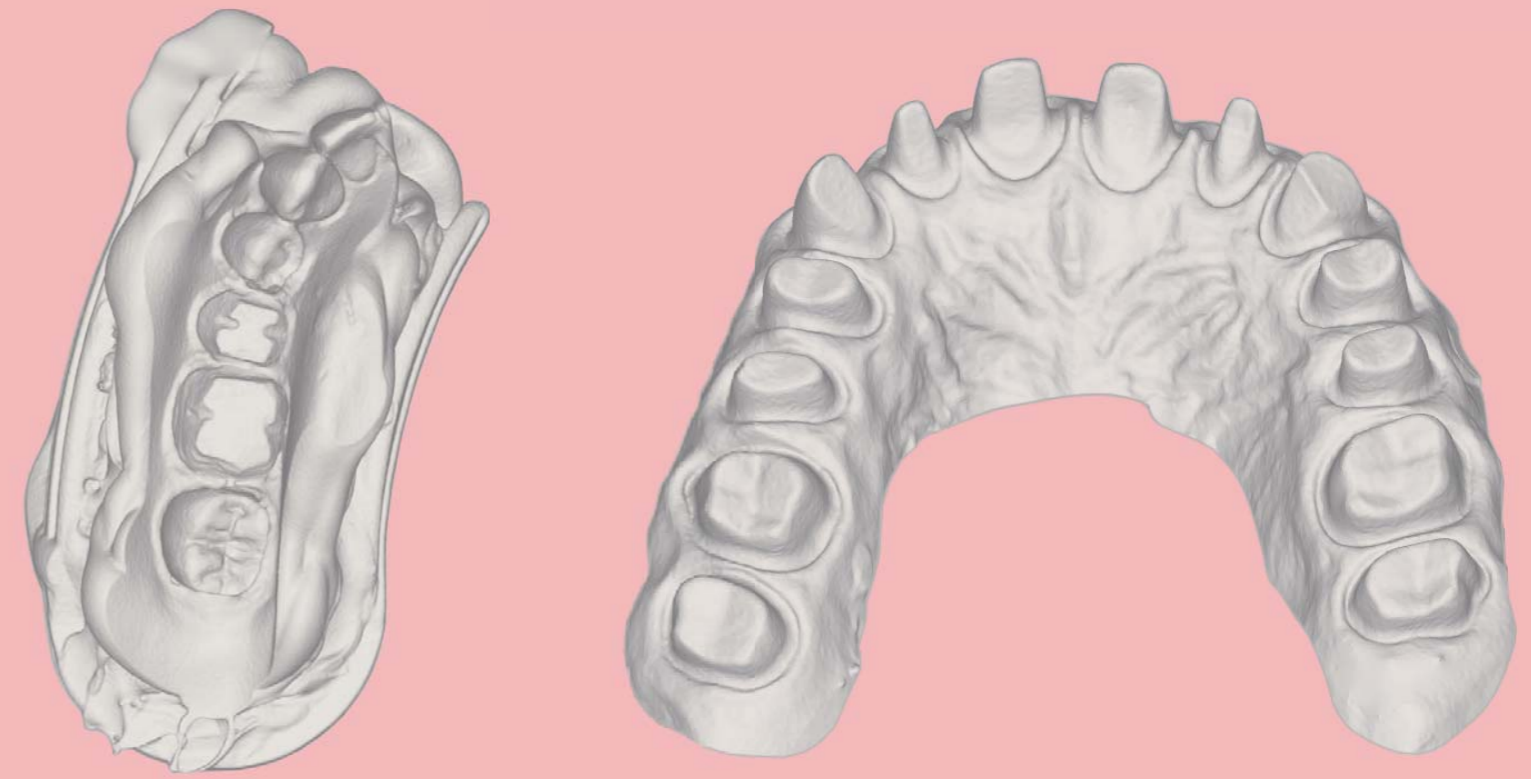
Stunning 3D scanning result :
detailed capture of undercut and shadow areas



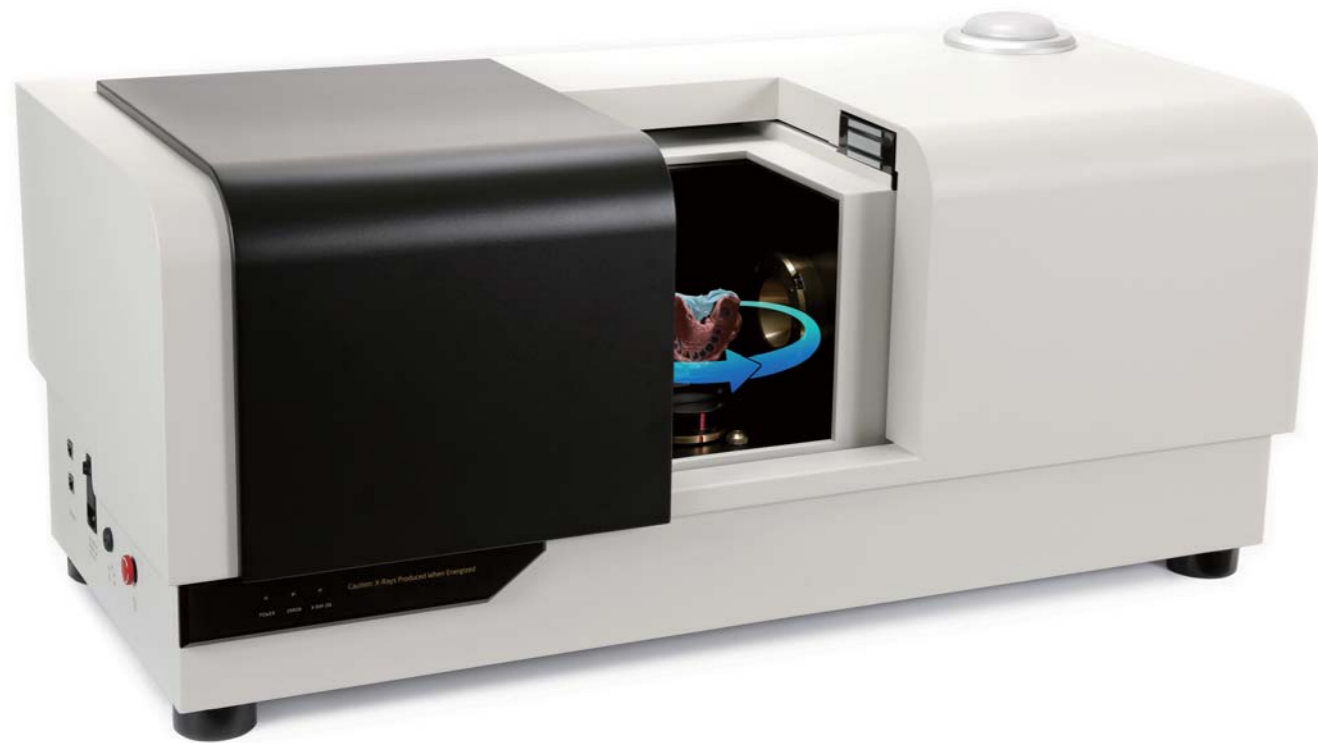
Everything is captured at one scan :
gingiva and scanbody for custom abutment & implant bar (Modeless implant bar scan)

Crystal clear outputs superior to optical scanners

Highly accurate scan for modeless CAD/CAM workflow



High compatibility (STL export)

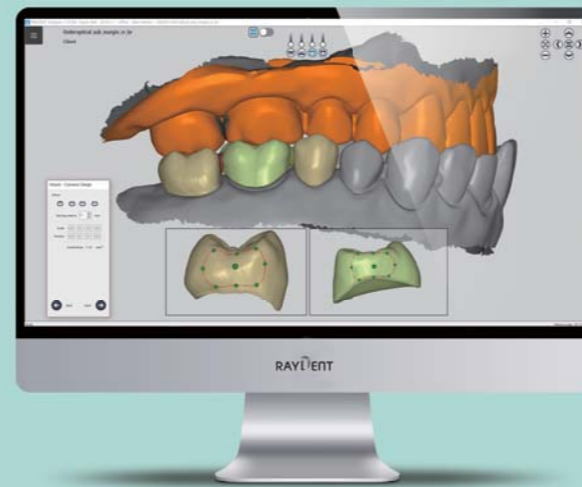


▶
STL
3D
data

1. Scan

RAYDENT Microscan

- Modeless workflow with the dental 3D scanner
- 3D scanning data in STL format



2. Design

RAYDENT designer



3. 3D Printing

RAYDENT Printer

Compatible
with RAYDENT Solution (Chairside CAD/CAM solution)
with any Open CAD/CAM System

Technical Specifications

RBS-RM01 (rev.0)

Design and specifications are subject to change without notice

RAYDENT
Microscan
(MCT750)

Power requirements	100-240V~, 50/60Hz, Max 3A
X-ray characteristics	Tube Voltage: 60~80kV, Tube Current: 0.4~0.7mA
FOV (dia. x H)	85 x 85mm
Scan time	20sec~2min
Dimensions (W x D x H)	970mm x 440mm x 452mm
Weight	150kg



Ray Co., Ltd. 🏢

332-7, Samsung1-ro, Hwaseong-si, Gyeonggi-do, 18380, Korea

Phone +82.31.605.1000

Email ray_sales@raymedical.co.kr

Web www.raymedical.com